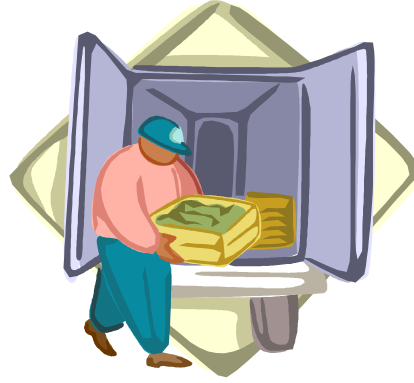


Best Management Practices



Tractor Trailer Washouts & Inspection

For:

- Meat
- Poultry
- Seafood
- Fruit and Vegetables
- Plants
- Grain
- Fertilizer
- Pet Food

An Educational Publication

Prepared By: Dan Jenkins, Grapple Hook Marketing, Inc.

813-877-4665

For: Tampa Bay Truck Center

November, 2006

INTRODUCTION

A pressing issues that the Food and Agriculture Industry must face today is Food Safety and Pollution as it pertains to the transportation of goods.

Most of the over the road trailers carrying our nation's food supply need to properly cleaned and inspected prior to loading any type of food, meat or living plant to ensure there is no contamination from previous loads. In years past, and to some extent today, many tractor trailers that haul food are washed out by pressure washing in parking lots where water and waste end up in storm sewers or fall to the parking lot surface and leach into the ground water. Often time the cleaning of exterior of trucks is cleaned at the same time and grease, oils and heavy metals are also removed.

Many of Florida's water resources are particularly susceptible to this type of pollution because of the unique geology of the state. Floridians obtain almost all of their drinking water from wells. The ground water supplies often lie very near the land surface which allow chemicals to leach through without much binding to the soil. Additionally, many of Florida's surface waters are directly connected to our ground waters through sinks and springs.

Tampa Bay Truck Wash Center (TBTW) has been aggressively involved for several years in ensuring that its own **Best Management Practices** (BMP) are used in trailer wash out operations that will provide for a safe workplace and demonstrate environmental responsibility. The health and safety of truck wash employees and the protection of food and food facilities are the primary goals of the TBTW BMP.

In addition, TBTW strives for:

- An open dialogue and inspection with city, state, county, trade groups and government agencies
- Improved site design to control runoff and potential spillage.

General Best Management Practice Principles For Cleaning Food Hauling Trailers

The general approach to the **TBTW BMP** of Trailer Wash Outs involve Six (6) principles:

- 1) Remove all loose debris and soil physically and dispose of properly.
- 2) Wash entire trailer floor and base boards thoroughly and rinse with high pressure **Spot Free Rinse Water. Spot Free Rinse Water not only aids in cleaning and rinsing, it leaves very little, if any residue to help prevent soil accumulation.**
- 3) Unclog drain holes.
- 4) Physically inspect entire trailer floor and base boards to ensure soil and contaminants have been removed.

Additional items on TBTW Trailer Wash Out Procedures List include:

- a) Cleaning of side walls
 - b) Cleaning of ceiling
 - c) Cleaning of cooling shield
 - d) Cleaning of back walls and door interior.
 - e) Sanitize / Disinfect using customer requirements upon request:
 - 1.
 - 2.
 - 3.
 - 4.
 - 5.
- 5) Document each wash ticket with time of cleaning and destination of trailer.
 - 6) Dispose of water and waste in an environmentally sound manner.
 - 7) Ensure that all operations in full compliance with federal, state and local government agencies.

Additional items on TBTW Trailer Wash Out Procedures List include:

- f) Cleaning of side walls
- g) Cleaning of ceiling
- h) Cleaning of cooling shield
- i) Cleaning of back walls and door interior.
- j) Sanitize / Disinfect using customer requirements upon request:
 - 1.
 - 2.
 - 3.
 - 4.
 - 5.

GENERAL MANAGEMENT PRACTICES

Good, progressive **management practices** are vital to preventing contaminated runoff and ensuring cleanliness of trailers. **TBTW's BMP** includes:

1. Appointed pollution prevention officer on staff.
2. Performance of regular inspections and preventative maintenance of stormwater control structures, barriers, slopes, retention areas, tank containment, etc. The facility is carefully observed during heavy rainfall events to ensure that no contaminated discharges occur either to existing on-site stormwater systems, to municipal storm sewer systems, or off site.
3. Appropriate actions and lines of communication are to be followed if an employee reports an incident or undesirable practice.

WASHOUT FACILITIES Questionnaire for Management:

- 1) Are General Best Management Practices For Cleaning Food Hauling Trailer stated above being followed, if so to what degree?
- 2) Are the individuals responsible for environmental management, safety and training clearly identified?

- 3) Does the design and construction of wash area or parking lot prevent potential contaminants from leaving the area?
- 4) Are inspections and maintenance of environmental installations, barriers, slopes, retention areas and waste receptacles etc. performed regularly?
- 5) Has facility and wash out provider provided, or offered to provide a tour of facility to the local emergency response team, DEP, State Department of Agriculture and or Public Owned, Treatment Works (POTW)?
- 6) Is washing provider or facility hold and present proper industrial waste water and POTW permits for discharge?
- 7) Are accurate samples of wastewater submitted to POTW on regular basis?
- 8) Is food waste disposed of in accordance with state and local standards?

Information obtained from the following sources:

Florida Agriculture Consumer Services BMP Document
Florida DEP
EPA
Florida Phosphate Council Documentation