



H2H Associates

H2H Associates Presents a One Hour Webinar:

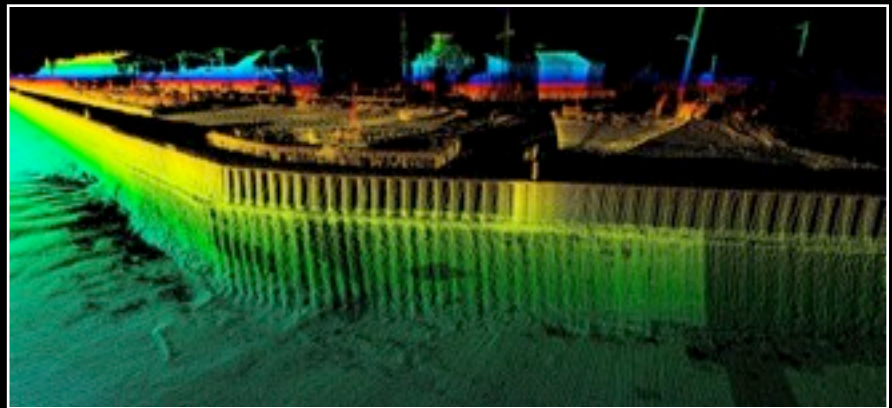
Combined Mobile Laser Scanning and Multibeam
Bathymetric Surveying For Improved Coastal, Port and
Waterway Mapping Utilizing

Simultaneous Above and Below Water Line Data Collection

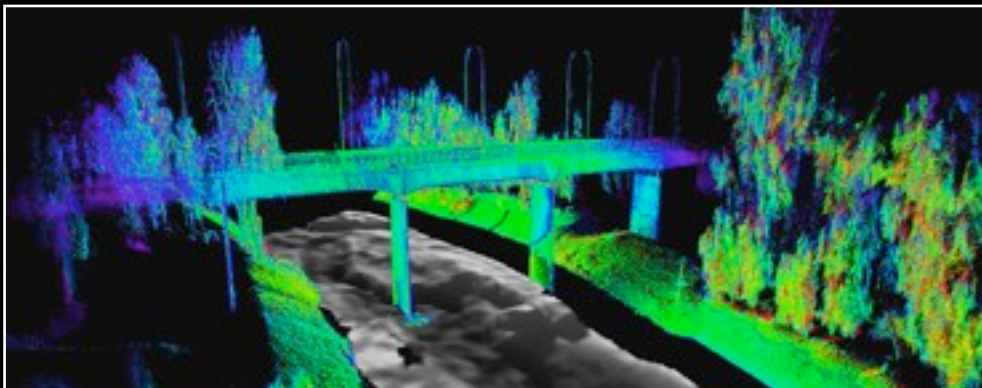
Thursday, May 17th, 2012 1:00 pm EST

Webinar Topics & System Applications

- Learn about the latest in 3D hydrographic and mobile laser scanning surveying techniques.
- How organizations can quickly and efficiently catalog the three dimensional characteristics of all their below water line and shore based assets using a single dedicated vessel.
- How the data generated from H2H's equipment can be used for:
 - Long Range Planning
 - Updating Navigation Charts
 - Scour Surveys
 - Bulkhead and Pier Monitoring
 - Pre-Construction Design Surveys
 - Dredge Planning and Implementation
 - Hydrology and Hydraulic Studies
 - Coastal Erosion Studies
 - Pre and Post Dredge Surveys
 - Reservoir and Dam Surveys
 - Floodplain Mapping



Explore how important geospatial data in a marine setting can be obtained from a single vessel through the integration of Multibeam Echosounders, LIDAR, and survey grade GPS systems.



Who Should Attend:

- Marine Design Engineers
- Dredge Contractors
- Port Security
- Environmental Managers
- Regulators

To Register:

Mark Farber:
mfarber@h2hassociates.com

For Technical Questions:

Trevor Thomas, P.E.:
tthomas@h2hassociates.com

See Our Live Presentation At

Port and Terminal Conference, Miami, FL.

Thursday, April 26th – 11:50